

[www.hsflamingo.com](http://www.hsflamingo.com)



 **AQUAFLAM<sup>®</sup>**  
**VARIO**

## Aquaflam VARIO Wood Boiler Stoves

A practical modern solution to your stove heating needs

modern blackened glass



 **AQUAFLAM**  
**VARIO**

A state-of-the-art wood boiler stove that meets the requirements of even the most demanding customers. **Highly effective** and environmentally friendly. **Secondary combustion** technology with an efficiency exceeding 80 %. A unique solution providing a simple transition **from water heating to convection hot air heating**. Made from the best quality materials, using a technology that meets the strictest European norms. **A cooling loop**, that protects against overheating is included as standard. **Tertiary air supply** for perfect combustion and a continuous supply of air. There is, of course, an option to connect **outside air** to the stove. The optional integrated **electronic air supply regulation** automatically protects against overheating.

You can choose how you will operate your wood stove. Two heat exchanger power outputs and the option to operate the stove in full convection mode is Aquaflam VARIO !

Aquaflam VARIO

## WOOD BOILER STOVES

---

### 5 DESIGN PRODUCT LINES

The Peru, Sapiro, Kalmar, Lend and Barma represent the complete range of Aquaflam VARIO wood stove design options.

### SELECTION OF COLOUR OPTIONS

There are 5 colour options to choose from for the Sapiro, Lend and Kalmar wood stoves - grey, cream, red and two luxurious colours - brown velvet and olive. The Barma wood stove has a tiled exterior in Maple, Walnut and Bleached oak. The Peru stoves is available with white, green or brown ceramic tiles.

### SELECTION OF POWER OUTPUT

The wood stove is supplied with a heat exchanger as standard. The customer has the option of choosing from two power outputs: 3 - 9 kW and 5 - 11 kW into water.

### REGULATION

There are two types of control systems available for the wood stove. A manual option using a draw bar and an electronic option using a potentiometer with a safety heat sensor.

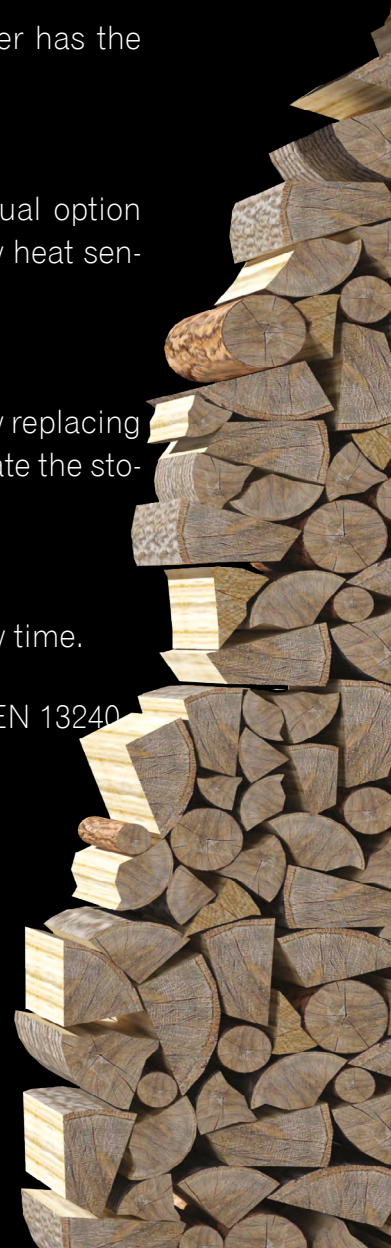
### HOT WATER BOILER / HOT CONVECTION AIR VERSIONS

If you decide to heat without a heat exchanger, you have the option of very easily replacing it with a blocking plate (deflector), which when used makes it possible to operate the stove in a hot air convection mode.

### TILE REPLACEMENT

Furthermore, on the Barma wood stove, it is possible to replace the tiles at any time.

Aquaflam VARIO wood boiler stoves meet the strictest European CE norms (EN 13240 BImSchV - Stufe 2, 15a B-VG, DINplus)





## when fire and water work together

---

The key feature of a modern wood stove is the ability to heat multiple rooms using radiators. AQUAFLAM VARIO wood stoves have a built-in heat exchanger, which ensures that heating water is heated quickly and effectively. Thanks to this, you can heat several rooms and even the entire house. At the same time, these stoves heat the room where they are located. Heat is transferred through the glass door and AQUAFLAM VARIO wood stoves also create so-called convective heat, which is produced by sucking in cold air and emitting it through the top air outlet. AQUAFLAM VARIO wood stoves ensure an even distribution of heat in the home and play the role of either the primary or secondary source of heat. This makes them highly demanded product on the European market.



## choose your colour...

olive

brown - velvet

grey



red

cream

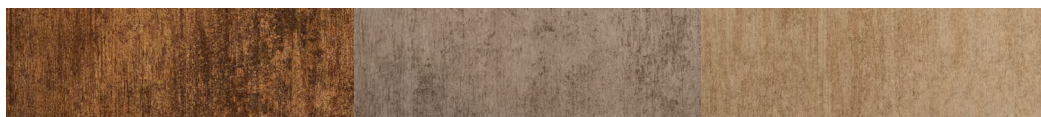


## tiles..

walnut tiles

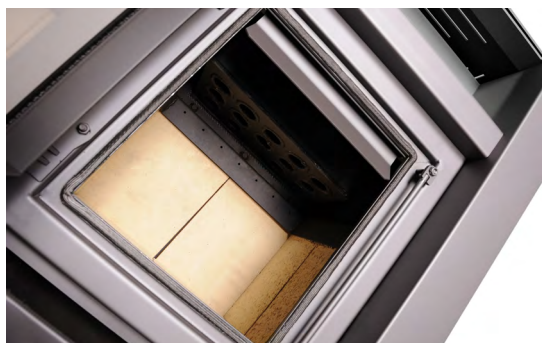
bleached oak tiles

maple tiles



### Perfect combustion

Ensures an intelligent delivery of primary, secondary and tertiary air into the firebox.

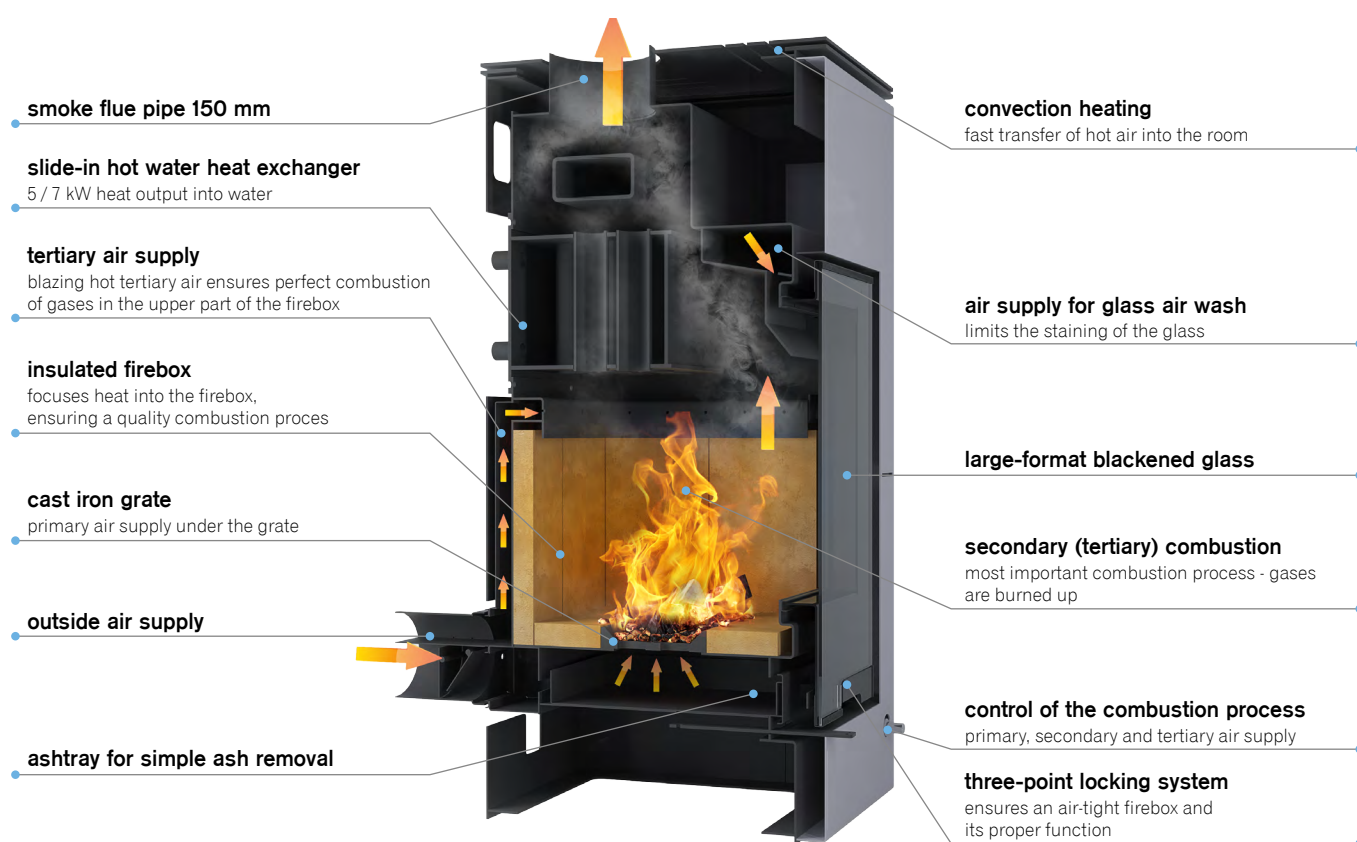


### Eko-Air-In outside air supply

An ideal connection is directly from the outside of the house. Aquaflam VARIO wood stoves are equipped with an inlet adapter for this air delivery as standard.



# Technical cross section Aquaflam VARIO ®

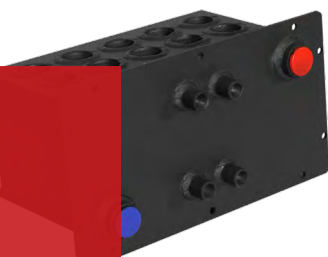


## You select the power of the heat exchanger

### HOT WATER BOILER / HOT CONVECTION AIR VERSIONS

---

All models and colour options are available also with the deflector (cover plate) enabling the stove to be operated without the need to be connected to the home's heating circuit.



hot water heat exchanger version  
with a power output of 3-9 kW and 5-11 kW



convective version with a deflector  
(can be purchased for all models)



wood boiler stove

# peru



Clean Burning



white



green



- + Primary, secondary and tertiary air supply
- + Secondary - perfect combustion
- + Glass wash - glass is always clean
- + Option to connect air from the outside
- + Vertical hot water heat exchanger
- + Cooling loop
- + Selection of a regulation (manual/electronic)
- + Ashtray
- + Extra long life gasket cord

## technical parameters

**5 kW 7 kW 11 kW**  
deflector ver.

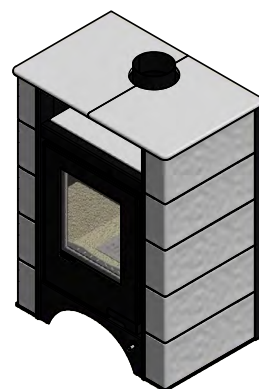
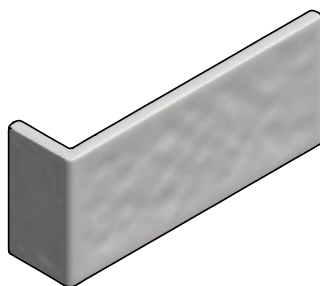
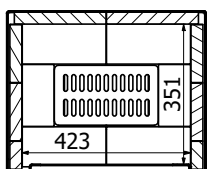
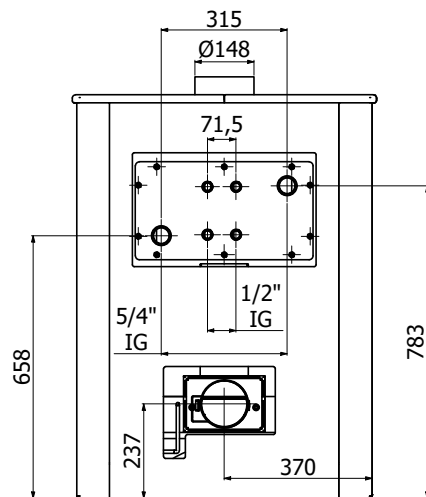
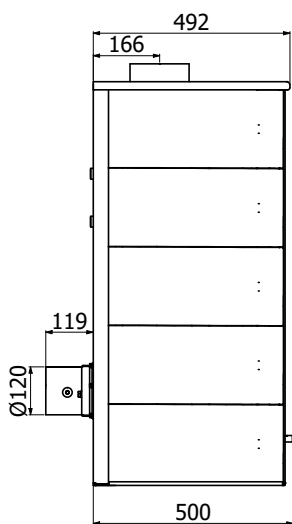
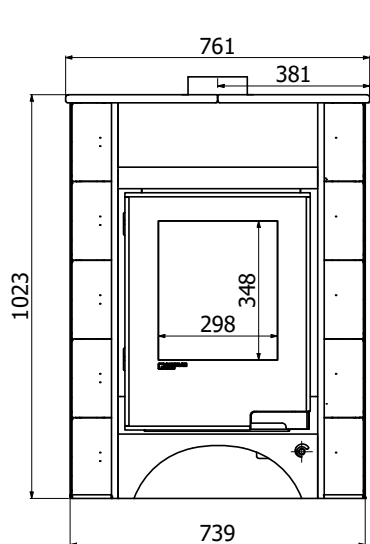
	5 kW	7 kW	11 kW
Nominal power   kW	11	11	11
Nominal power into water   kW	5	7	x
Nominal power range   kW	7 - 15		
Power into water range   kW	3 - 9	5 - 11	x
Stove efficiency   %	80.22	80.27	80.9
Fuel consumption   kg/hour	3.2	3.4	3
Operating draught   Pa	12 - 14		
Smoke flue diameter   mm	150		
Log length   cm	40		
Heating value   m <sup>3</sup>	140 - 300		
Weight   kg	229	232	215
CO emissions (at 13% O <sub>2</sub> )   %	0.096	0.093	0.094
Average flue gas temperature   °C	273	267	293
Maximum operating pressure   bar	2.5	x	
Warranty	5 years		

**brown**

produced by HS Flamingo s.r.o.

www.hsflamingo.com





wood boiler stove

# saporo



red



brown - velvet



olive



grey



- + Primary, secondary and tertiary air supply
- + Secondary - perfect combustion
- + Glass wash - glass is always clean
- + Option to connect air from the outside
- + Vertical hot water heat exchanger
- + Cooling loop
- + Selection of a regulation (manual/electronic)
- + Ashtray
- + Extra long life gasket cord

## technical parameters

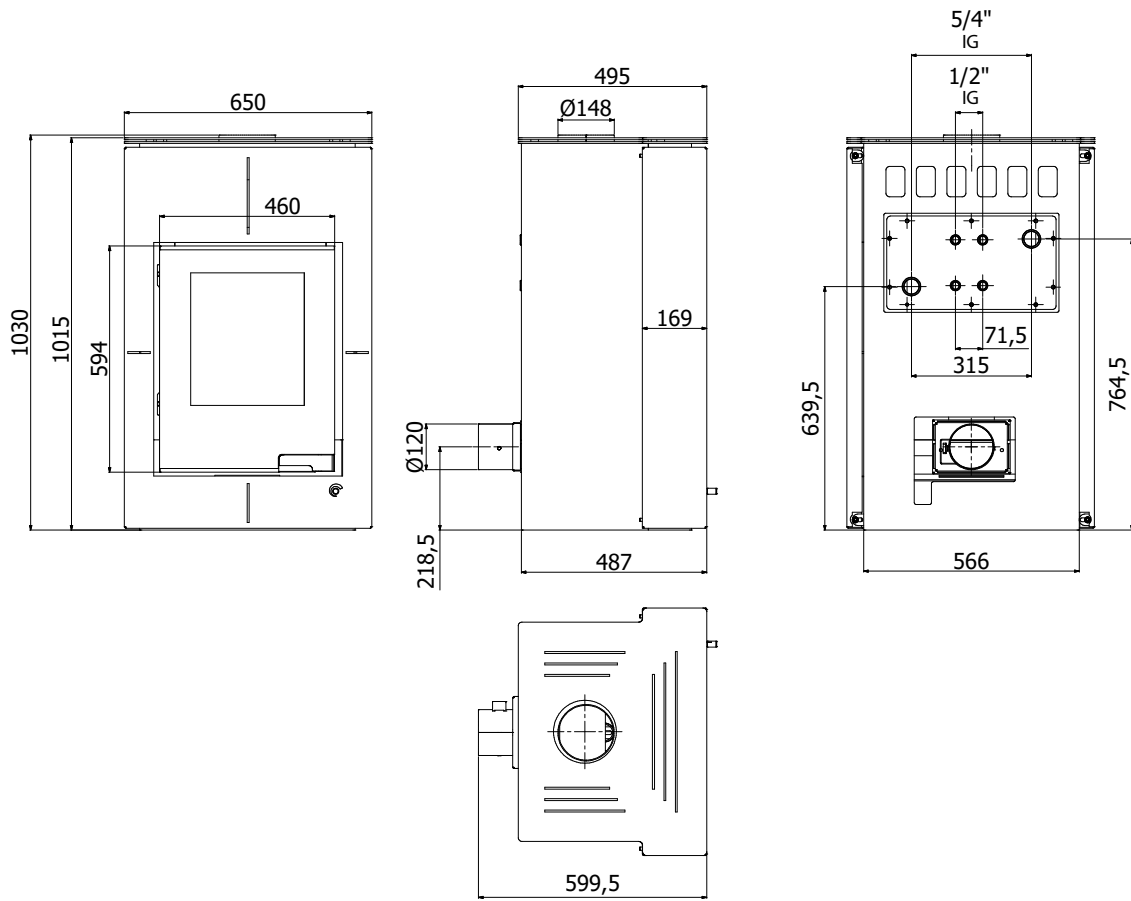
**5 kW 7 kW 11 kW**  
deflector ver.

	5 kW	7 kW	11 kW
Nominal power   kW	11	11	11
Nominal power into water   kW	5	7	x
Nominal power range   kW	7 - 15		
Power into water range   kW	3 - 9	5 - 11	x
Stove efficiency   %	80.22	80.27	80.9
Fuel consumption   kg/hour	3.2	3.4	3
Operating draught   Pa	12 - 14		
Smoke flue diameter   mm	150		
Log length   cm	40		
Heating value   m <sup>3</sup>	140 - 300		
Weight   kg	182	185	167
CO emissions (at 13% O <sub>2</sub> )   %	0.096	0.093	0.094
Average flue gas temperature   °C	273	267	293
Maximum operating pressure   bar	2.5	x	
Warranty	5 years		

**cream**

produced by HS Flamingo s.r.o.

www.hsflamingo.com







wood boiler stove

# kalmar



brown - velvet



cream



olive



grey



- + Primary, secondary and tertiary air supply
- + Secondary - perfect combustion
- + Glass wash - glass is always clean
- + Option to connect air from the outside
- + Vertical hot water heat exchanger
- + Cooling loop
- + Selection of a regulation (manual/electronic)
- + Ashtray
- + Extra long life gasket cord

## technical parameters

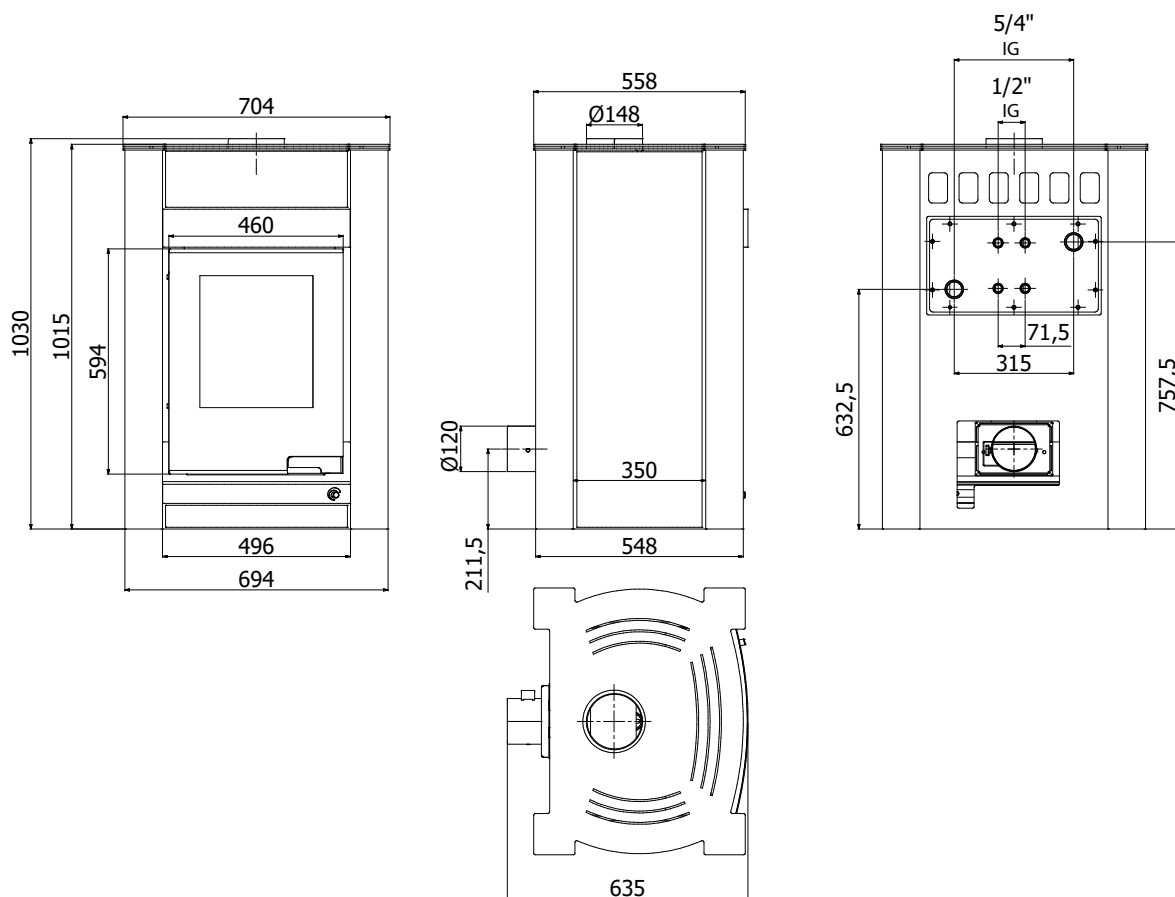
**5 kW 7 kW 11 kW**  
deflector ver.

Nominal power   kW	11	11	11
Nominal power into water   kW	5	7	x
Nominal power range   kW	7 - 15		
Power into water range   kW	3 - 9	5 - 11	x
Stove efficiency   %	80.22	80.27	80.9
Fuel consumption   kg/hour	3.2	3.4	3
Operating draught   Pa	12 - 14		
Smoke flue diameter   mm	150		
Log length   cm	40		
Heating value   m <sup>3</sup>	140 - 300		
Weight   kg	216	219	201
CO emissions (at 13% O <sub>2</sub> )   %	0.096	0.093	0.094
Average flue gas temperature   °C	273	267	293
Maximum operating pressure   bar	2.5	x	
Warranty	5 years		

**red**

produced by HS Flamingo s.r.o.

www.hsflamingo.com









wood boiler stove

# lend



red



cream



olive



grey



- + Primary, secondary and tertiary air supply
- + Secondary - perfect combustion
- + Glass wash - glass is always clean
- + Option to connect air from the outside
- + Vertical hot water heat exchanger
- + Cooling loop
- + Selection of a regulation (manual/electronic)
- + Ashtray
- + Extra long life gasket cord

## technical parameters

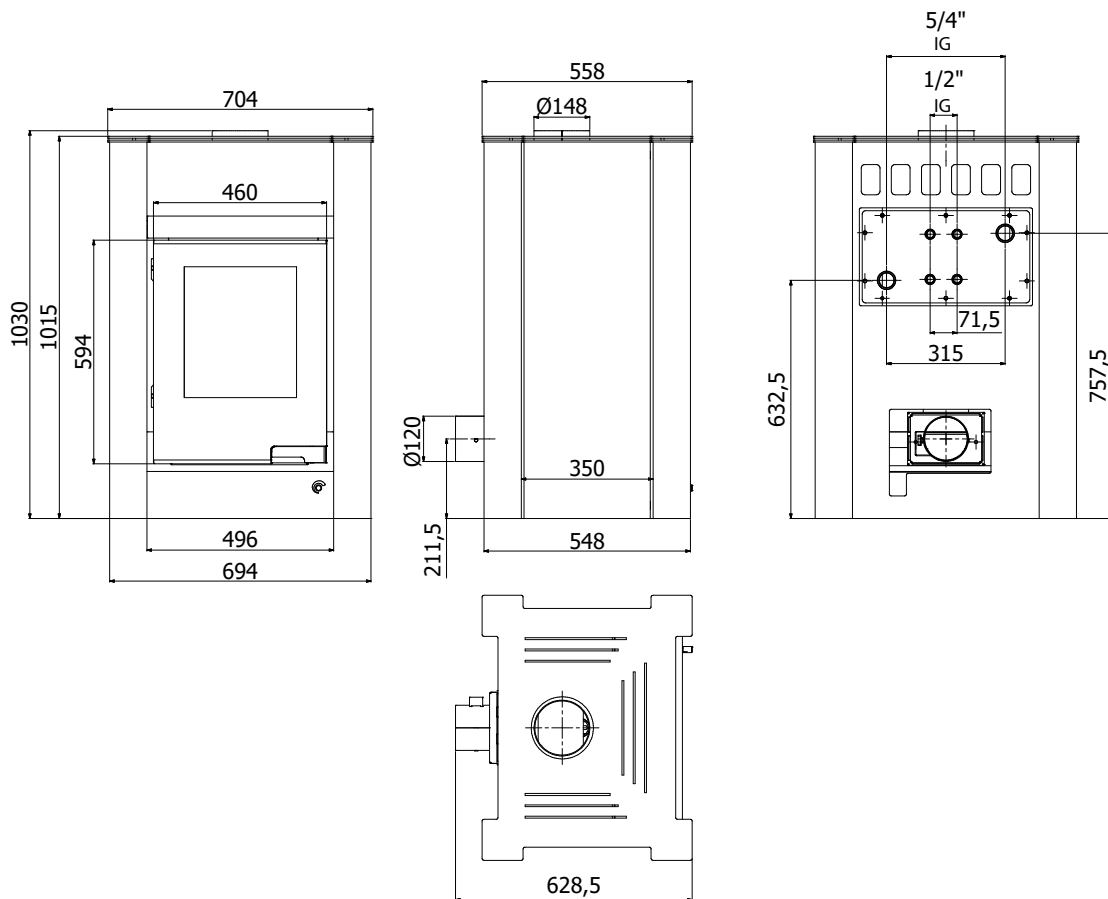
**5 kW 7 kW 11 kW**  
deflector ver.

Nominal power   kW	11	11	11
Nominal power into water   kW	5	7	x
Nominal power range   kW	7 - 15		
Power into water range   kW	3 - 9	5 - 11	x
Stove efficiency   %	80.22	80.27	80.9
Fuel consumption   kg/hour	3.2	3.4	3
Operating draught   Pa	12 - 14		
Smoke flue diameter   mm	150		
Log length   cm	40		
Heating value   m <sup>3</sup>	140 - 300		
Weight   kg	193	196	180
CO emissions (at 13% O <sub>2</sub> )   %	0.096	0.093	0.094
Average flue gas temperature   °C	273	267	293
Maximum operating pressure   bar	2.5	x	
Warranty	5 years		

**brown - velvet**

produced by HS Flamingo s.r.o.

www.hsflamingo.com







wood boiler stove

# barma



whitened oak tiles



walnut tiles



simple tile replacement



- + Primary, secondary and tertiary air supply
- + Secondary - perfect combustion
- + Glass wash - glass is always clean
- + Option to connect air from the outside
- + Vertical hot water heat exchanger
- + Cooling loop
- + Selection of a regulation (manual/electronic)
- + Ashtray
- + Extra long life gasket cord

## technical parameters

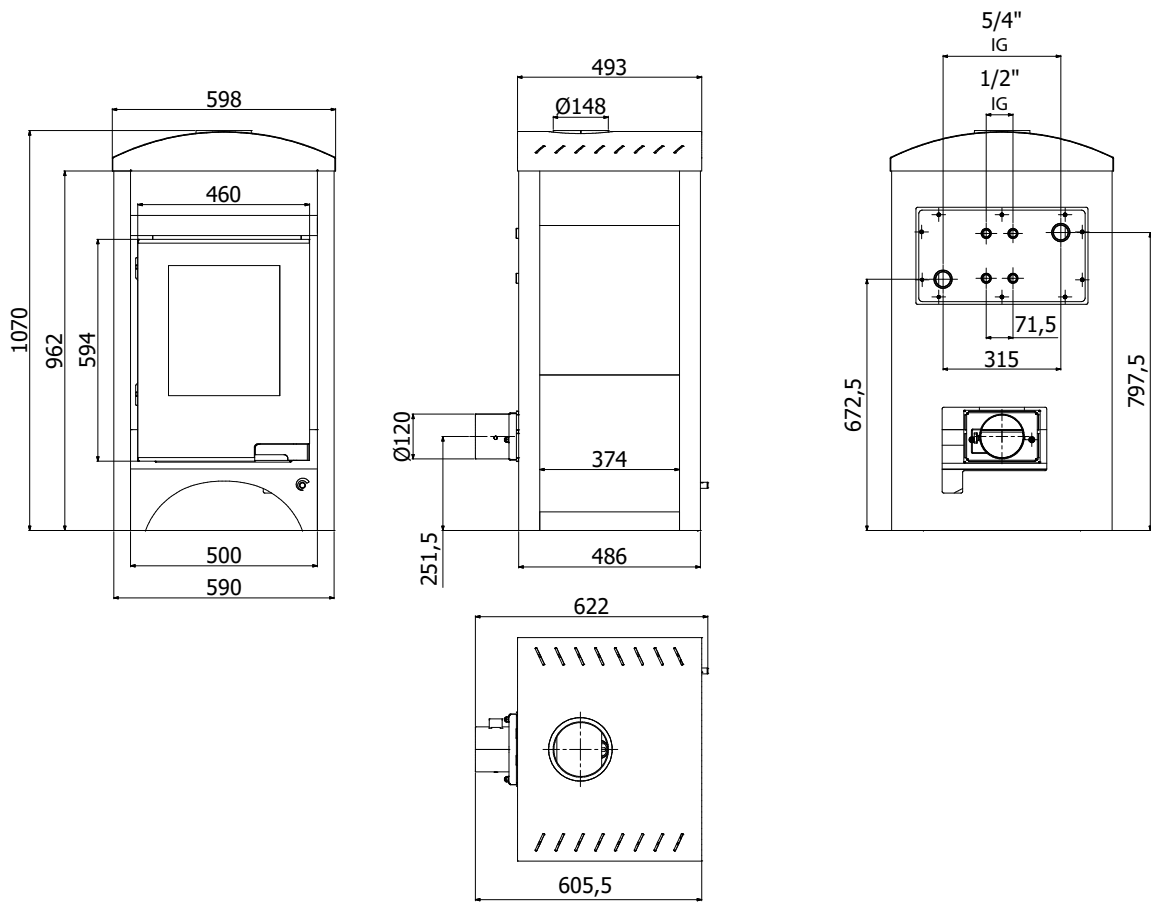
**5 kW 7 kW 11 kW**  
deflector ver.

Nominal power   kW	11	11	11
Nominal power into water   kW	5	7	x
Nominal power range   kW	7 - 15		
Power into water range   kW	3 - 9	5 - 11	x
Stove efficiency   %	80.22	80.27	80.9
Fuel consumption   kg/hour	3.2	3.4	3
Operating draught   Pa	12 - 14		
Smoke flue diameter   mm	150		
Log length   cm	40		
Heating value   m <sup>3</sup>	140 - 300		
Weight   kg	166	169	152
CO emissions (at 13% O <sub>2</sub> )   %	0.096	0.093	0.094
Average flue gas temperature   °C	273	267	293
Maximum operating pressure   bar	2.5	x	
Warranty	5 years		

## maple tiles

produced by HS Flamingo s.r.o.

www.hsflamingo.com









## Safety

### AQUAFLAM VARIO

#### Safeguards against overheating

If the temperature rises and there is a danger of overheating this will lead to an acute growth in the pressure in the exchanger. In order to avoid damaging it, we must ensure that overheating does not occur in the fireplace. We can prevent this using a safety valve, cooling loop, backup source or by the draining of water to the sewage system with a subsequent intake from the water supply system. However, if the intake of water is dependent on electricity, we recommend to purchase a backup power source (UPS).

#### Safeguards against gas explosions

If the damper is in the closed position it will prevent the tertiary air inlet from being completely closed. Thus, if it is completely closed, a minimal amount of air still flows into the combustion chamber. This safeguard protects the user against an explosion of the accumulated gases.

#### Safeguards against increased temperature

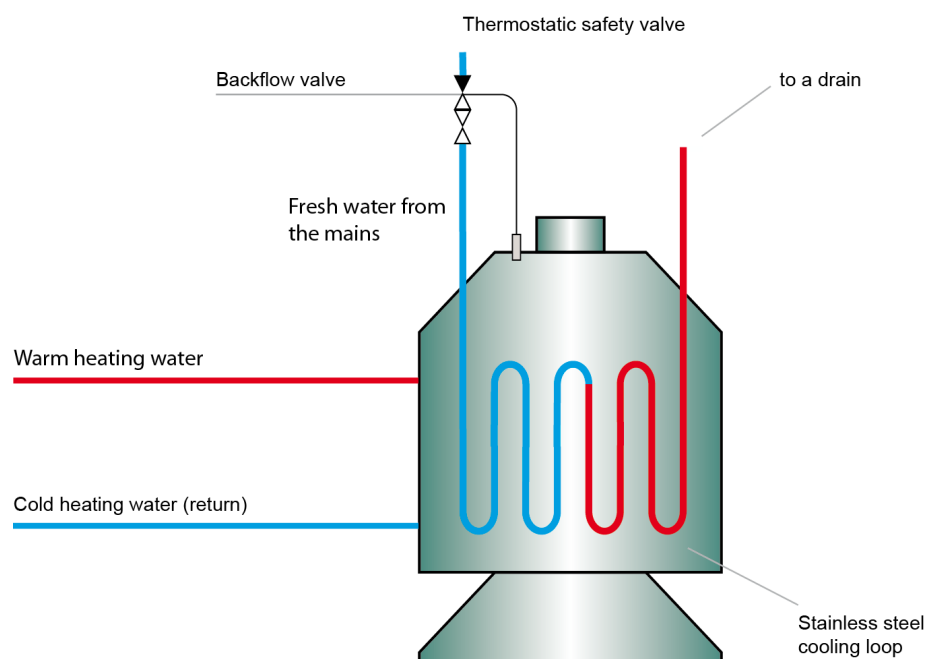
As soon as the electronic damper sensor registers an increased temperature in the heat exchanger, the damper shuts automatically and so reduces the amount of combustion air to a minimum. (Available only on models with the basic electronic regulation).

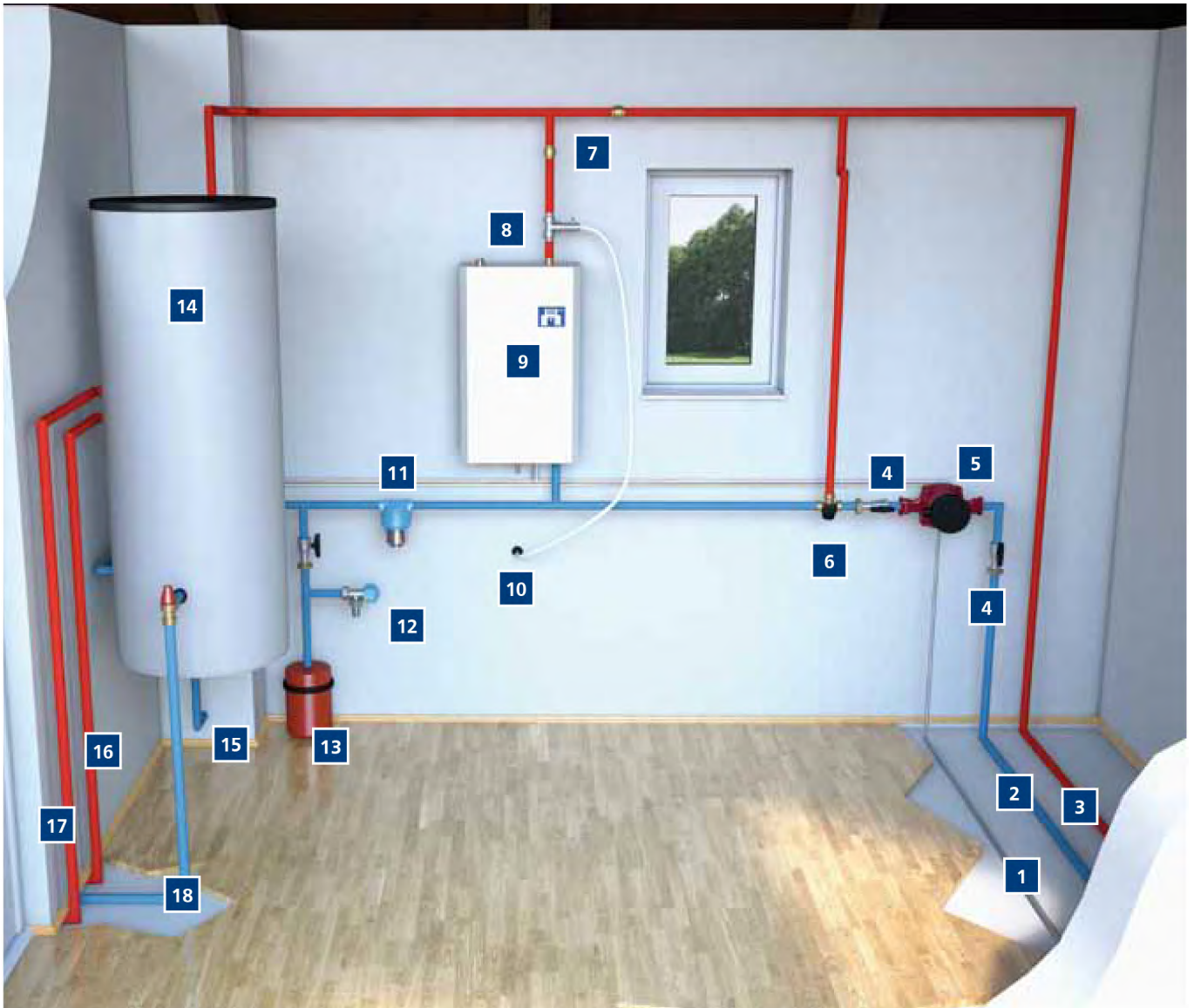
## Installation

### AQUAFLAM VARIO

A professional installation is very important for the system to function properly and to ensure its long lifetime.

The heating system must be equipped with the prescribed elements, which will ensure safe operation. The entire system must be separated into a short and long circuit, so that the lifetime of the heat exchanger is not threatened. If the temperature of the water in system is too low, corrosion results and the lifetime of the system is reduced. Furthermore, it is necessary to secure the system against overheating. All the basic versions of the Aquaflam VARIO wood stoves have this safety element. It consists of a cooling loop, which thanks to a thermostatic valve, cools the water in the heat exchanger.



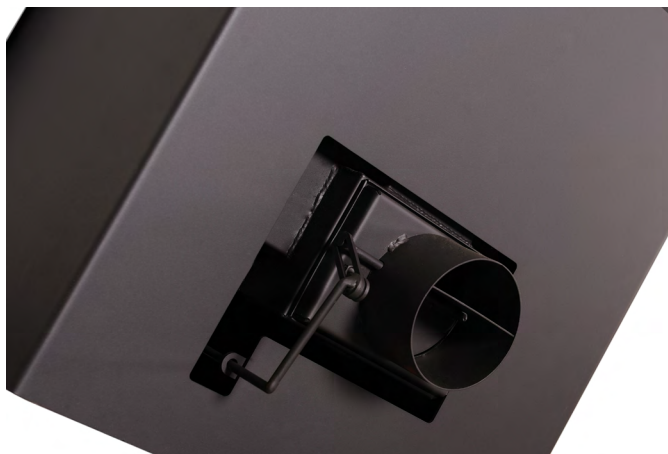


- |  |  |
|--|--|
| <ol style="list-style-type: none"> <li>1. Communication cable (for automatic control)</li> <li>2. Cold heating water returning to the insert (return)</li> <li>3. Warm heating water from the insert</li> <li>4. Ball valve</li> <li>5. Pump (recommended with backup power source)</li> <li>6. Thermostatic three-way valve</li> <li>7. Backflow valve</li> <li>8. Safety valve</li> <li>9. Bivalent heat source (electric boiler, gas boiler)</li> </ol> | <ol style="list-style-type: none"> <li>10. Drain outlet for safety valve</li> <li>11. Filter box</li> <li>12. Inspection valve</li> <li>13. Expansion vessel</li> <li>14. Thermal storage tank (for heating and utility water)</li> <li>15. Fresh water supply from the mains</li> <li>16. Warm utility water (sink)</li> <li>17. Warm heating water (radiators)</li> <li>18. Cold heating water returning from radiators</li> </ol> |
|--|--|

## Selecting a regulation for your wood boiler stove AQUAFLAM VARIO

You can select the type of regulation for every model. You can choose from a classic manual style as well as an electronic regulation with an overheating protection sensor.

manual regulation



electronic regulation



## Connection AQUAFLAM VARIO

We are professionals in our field and so we can give you the personal attention that is required to find the right solution for your heating needs. We are always here for you to help with answering any questions about connection or operation of the Aquaflam VARIO wood stove.



full product range at [www.hsflamingo.com](http://www.hsflamingo.com)

Vendor:



**HS Flamingo s.r.o.**  
třída Osvobození 65, CZ - 550 01  
Broumov, Czech Republic

tel.: +420 491 422 647, fax: +420 491 521 140  
email: [export@hsflamingo.cz](mailto:export@hsflamingo.cz)

[www.hsflamingo.com](http://www.hsflamingo.com)

Copyright © 2022 HS Flamingo s.r.o.  
042022

